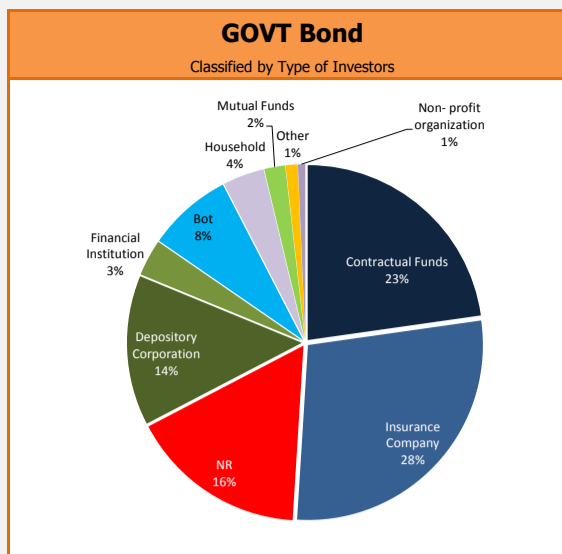


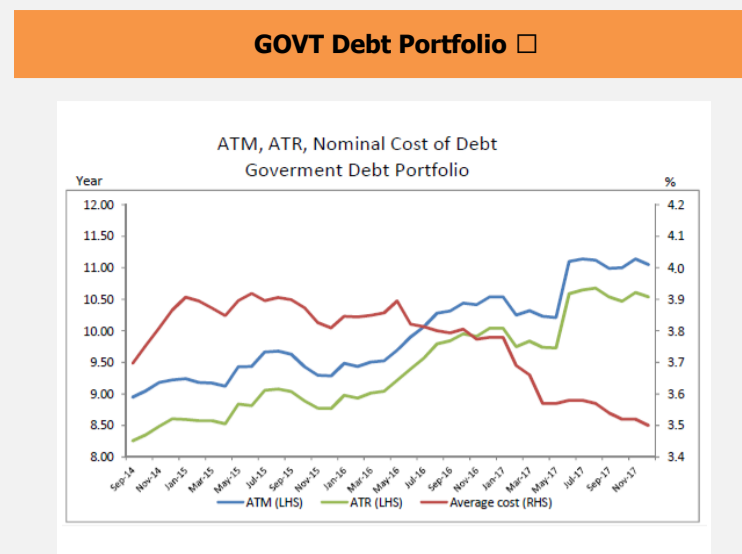
PUBLIC DEBT DATA

Public Debt			
Debt to GDP = 41.44%			
6,486,711.48 THB Mil.			
Outstanding Debt (THB Mil.)	%	Chg. from Feb-17 (THB Mil.)	
GOVT	4,309,672.99	66%	37,867.22
- Domestic	4,216,238.44	65%	-55,567.33
- Foreign	93,434.55	1%	-772.37
FIDF	873,223.21	13%	0.00
Debt Prefunding	0.00	0%	0.00
SOE	914,646.77	14%	-4,251.39
- G	411,075.73	6%	-2,010.89
- NG	503,571.04	8%	-2,240.50
SFIs	379,903.38	7%	-1,143.56
Others	9,265.13	0%	70.32
Total	6,486,711.48	100%	32,542.59

Source : PDMO as of Apr 2018

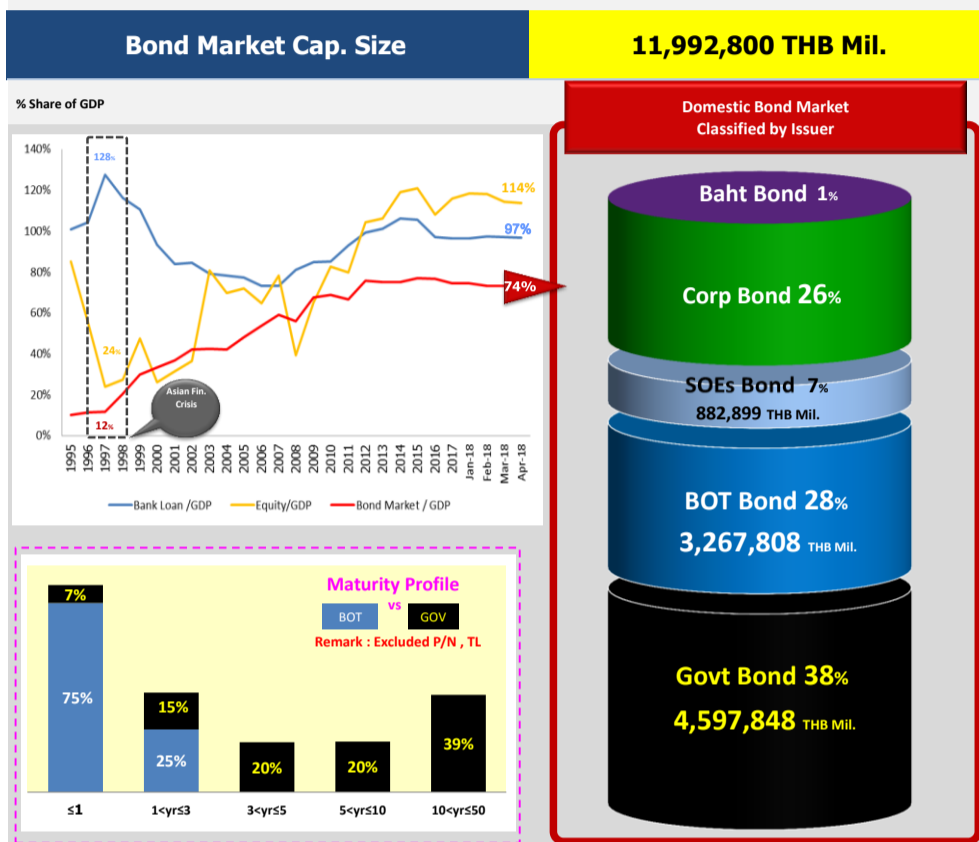


Source : BOT as of Apr 2018



Source : PDMO as of Dec 2017

Bond Market Data



Source : ThaiBMA as of Jun 29th, 2017

GOVT Bond Auction Schedule Q3/FY2018

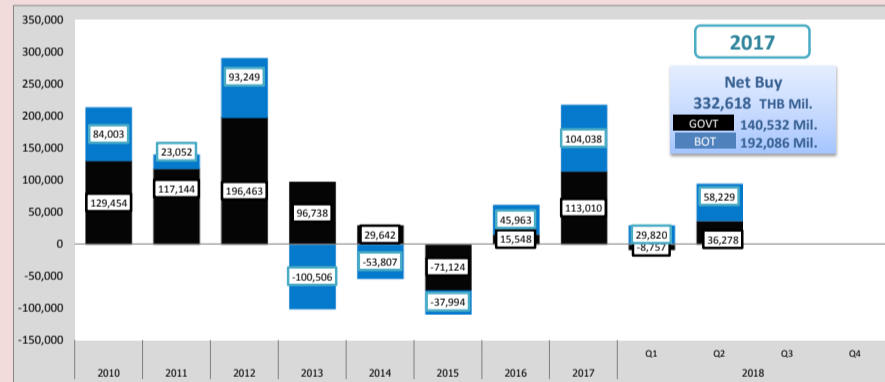
Date	Tenor (Year)	Symbol	Auction Amount (THB Mil.)	Total Allocated CB+NCB (THB Mil.)	Allocated CB (THB Mil.)	NCB (THB Mil.)	BCR	G/O	AAY (%)	Spread (bps)	Min. (bps)	Max. (bps)
18-Apr-18	30	LB466A	13,000	10,870	10,470	400	0.83		3.33	2.71	-1.10	10.00
25-Apr-18	5	LB22DA	30,000	30,000	30,000		2.72	1,690	1.89	1.81	1.00	1.90
9-May-18	15	LB326A	15,000	15,000	14,850	150	1.86		3.09	3.56	0.52	4.82
16-May-18	50	LB676A	14,000						Not allocated			
23-May-18	10	LB26DA	15,000	15,000	14,600	400	3.26		2.73	-0.82	-1.21	-0.41
6-Jun-18	20	LB366A	13,000	11,380	11,380	1,620	1.48	1,300	3.20	-1.64	-3.23	0.17
20-Jun-18	30	LB466A	13,000	7,010	5,470		0.54		3.60	8.93	4.42	14.42

Source : ThaiBMA

Non-Residence Holding

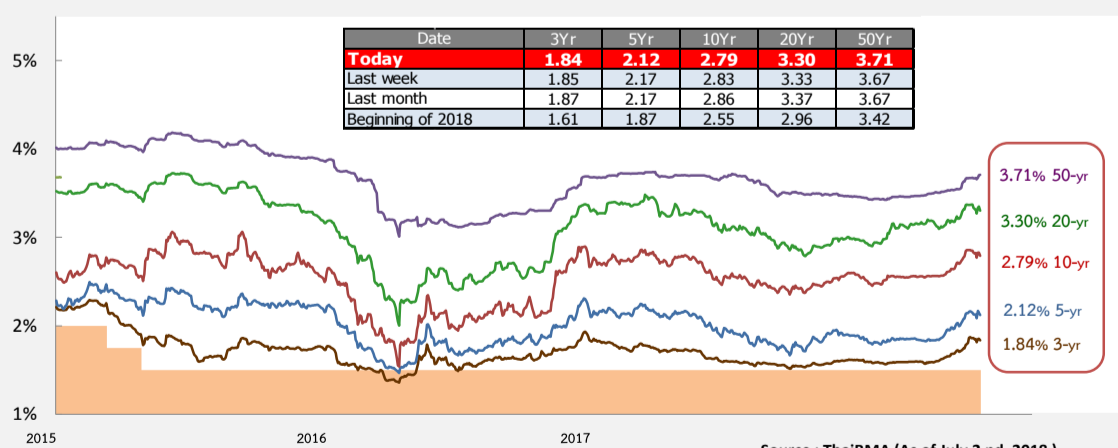
NR Holding Weekly

Issuer	Non-Resident Holding (THB Million)	% Share of Thai Bond Market Cap.
GOVT Bond	709,006	5.912%
BOT Bond	133,188	1.111%
SOE Bond	0	0.000%
Foreign Bond	84	0.001%
Corp Bond	676	0.006%
TOTAL	844,558	7.042%

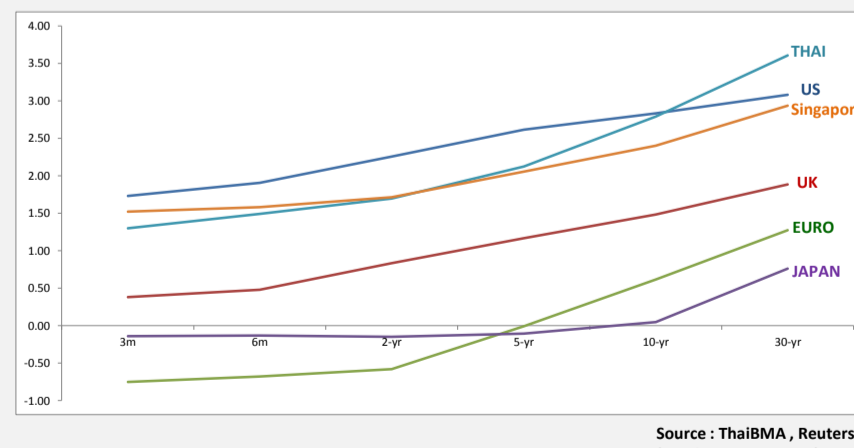


Source : PDMO (As of Jun 29th, 2017)

Yield Curve (Domestic & International Comparison)



Source : ThaiBMA (As of July 2nd, 2018)



Source : ThaiBMA, Reuters (As of July 2nd, 2018)